

Familiarity breeds contentment

■ Sally-Ann Jones

Stuart and Kaye Hyde built a Mediterranean-style three-bedroom, one-bathroom home on their Dianella block as "broke" newlyweds in 1972, bringing up their son and daughter there.

But years down the track, with three granddaughters and two grandsons, all aged from 18 months to eight years, they needed a much bigger house to accommodate their growing family.

Mrs Hyde said they looked elsewhere for a house but decided to stay, liking the area and the fact that, with new homes springing up all around them, the neighbourhood was getting a second lease of life.

She said it was worth the angst and the time they had to rent nearby while their new abode was being built.

Mrs Hyde said before choosing Sol Construction, she and her husband looked at display homes but felt they all looked the same. When a friend recommended award-winning designer Peter Fryer of Peter Fryer Design, they consulted him and he in turn recommended Sol Construction.



The Hydies' new home reflects the revitalisation taking place in Dianella.

The couple wanted a house with a main suite on the ground floor overlooking the pool and with three more bedrooms and a sitting room with a kitchenette upstairs. The basement level has space for the family's home-brewed beer and storage.

A lift connects the three levels, while a floating timber

staircase provides a warm contrast to the polished concrete on the ground floor.

There is also a ground-floor study and an open-plan indoor-outdoor entertaining zone all on one level, which includes the kitchen, dining room, family room with a fireplace and a covered alfresco area. Sliding glass

doors blur the boundaries between the interior and the garden, not only in the family areas but also in the main suite with its view of the pool and garden.

The garden was designed by Blake Willis of Blake Willis Landscape Architecture and, while it is smaller than the couple's first

garden, it is almost as productive, with herb and vegetable patches.

Mrs Hyde said having lived on the block for years, the couple knew which areas they wanted to benefit from the northern light.

"The house is beyond all our expectations," she said. "It's like a resort."

2015 HIA-Polytec Perth Housing Awards

Category Custom-built home

\$900,001-\$1,200,000

Location Dianella

Company Sol Construction

Contact 1300 121 765,

solconstruction.com.au



SWITCH FEEL AT HOME

Developing is easy with this narrow lot design.



A stunning double storey home architecturally designed to take the utmost advantage of a 10m wide block.

The Horizon is now open Saturday and Sunday 1-5pm to view.

Display Homes

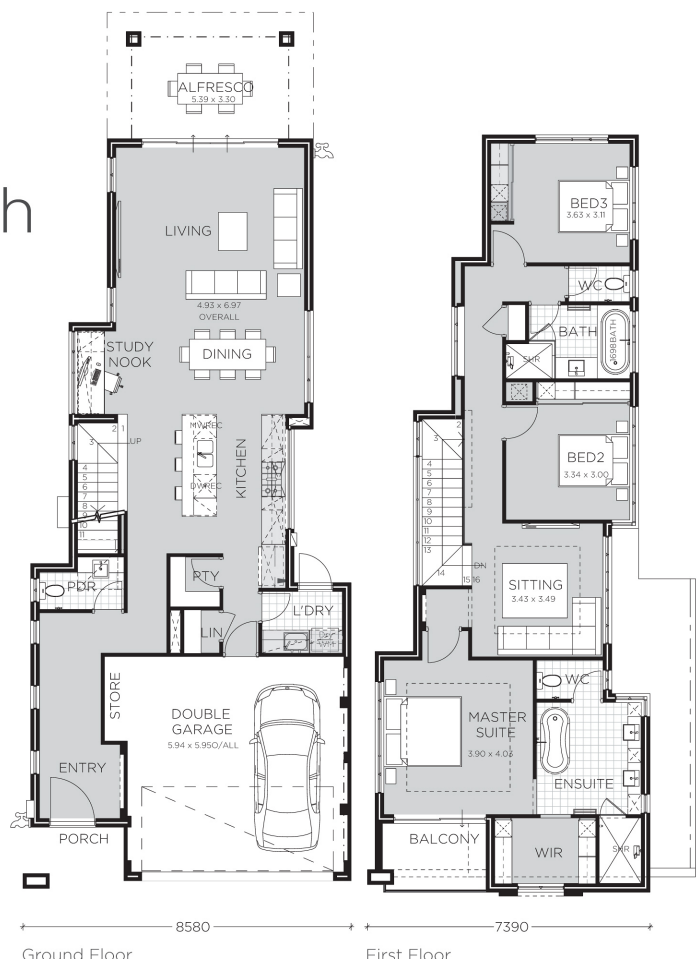
Scandia 5 Charleston Rd, Amberton estate, Eglinton

Boardwalk Dacelo Vista, Cygnia Cove, Waterford

Horizon Telford crescent, Stirling

Maya 27 Exchange Ave, Newhaven Estate, Harrisdale

Sales Enquiries 6274 7333
switchhomes.net.au



A **PINDAN** Partnership